

Sample Recurring Company

Module Require

=====

- DIY Field
- DIY Script
- Multiple Pricing (Price Tag)

Use Company Category for filtering

Step 1 : Customer | Maintain Customer | Cust. Category = Filtering

Maintain Customer

- Maintain Customer -

Company: Cik Satti Raja Thiagu
720312-18-2123
Control A/C: 300-000 Code: A-12-06 Cust. Category: A-Tenant

Step 1.1 : ChooseType of Tenant.

General Credit Control Note Sales Tax Member Info Meter Reading Taxi Info Tenant Info

Units
Build Up (sf) 0 Parking Lot 1 NK023
Parking Lot 2
Intermediate Corner

Extra
Owner Rental

Step 1.2 : Fill in the Important Info for the first time.

Attachments...

New Edit Delete Save Cancel Browse

Step 2 : Sales | Quotation |

DocNo Format := CompanyCategoryCode;Type

CompanyCategoryCode must exactly same as Maintain Customer Category Code

Type = For own reference to differentiate the purpose for the IV

Eg :

A-Tenant;Main => For Maintenance

A-Tenant;Water => For Water Billing

A-Tenant;Park => For Car Park

The screenshot shows a 'Quotation' window with a 'Cancelled' checkbox checked. The 'Quot No' field contains 'A-Tenant'. The date field shows '03/09/2009'. Below the form, there are two buttons: '1.Generate Maintenance' and '2.Generate Water'. A table lists items: MAINTENA... (300.00), PARKING (50.00), SINKING (25.00), and FIRE (50.00). The 'Local Net Total' and 'Net Total' are both 425.00.

Step 2.1 : Tick Cancelled

Step 2.2 : Quot No = Comp. Category, put in exactly same as Maintain Comp. Category Code.

Step 2.3 :

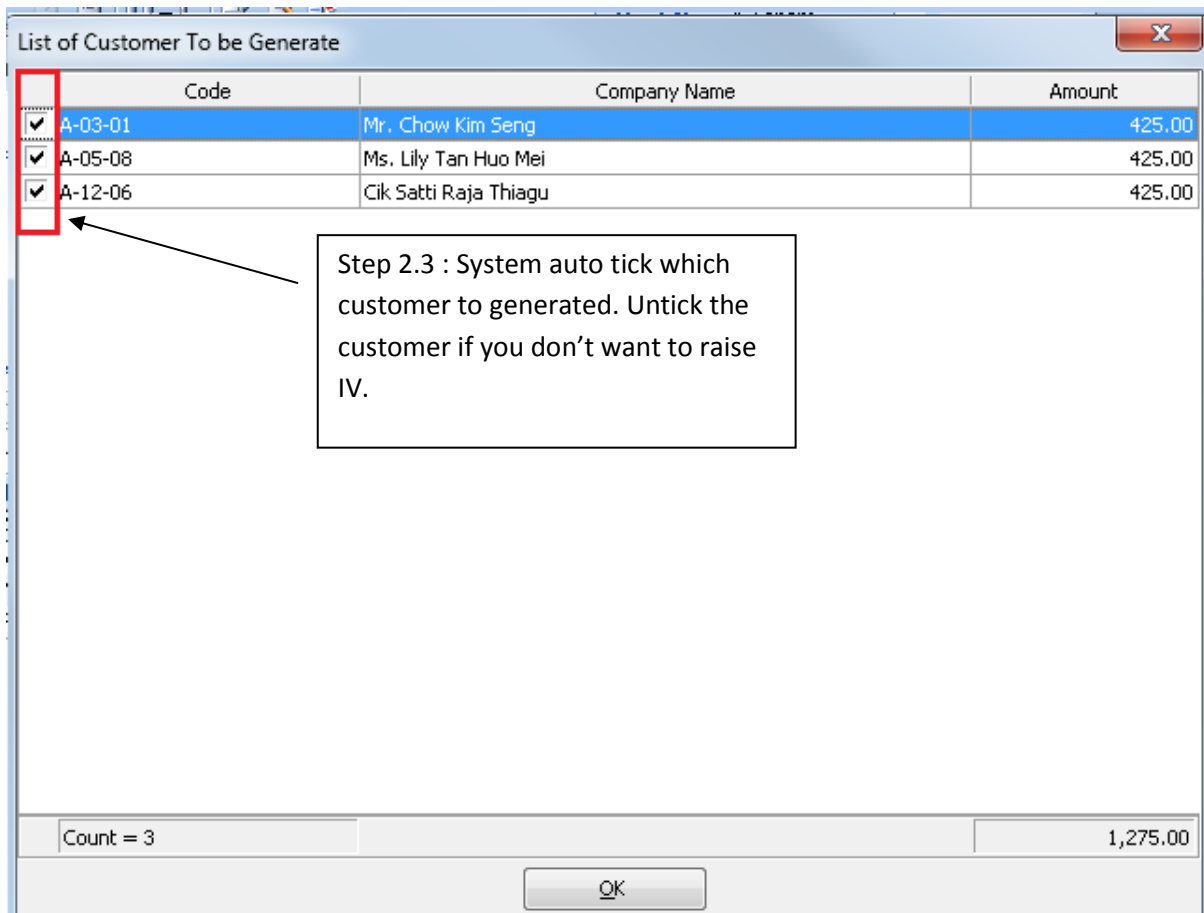
2.4 : Click on Generate Maintenance / Generate Water

Item Code	Description	More D...	Qty	U...	U/Price	Tax	Sub Total
MAINTENA...	Maintenance fee for the month of Se...		1	U...	300.00		300.00
PARKING	Parking Maintenance for the month of...		1	U...	50.00		50.00
SINKING	Sinking Fund for the month of Jan, 20...		1	U...	25.00		25.00
FIRE	Fire Fund from 01/01/2008 to 31/03/...		1	U...	50.00		50.00

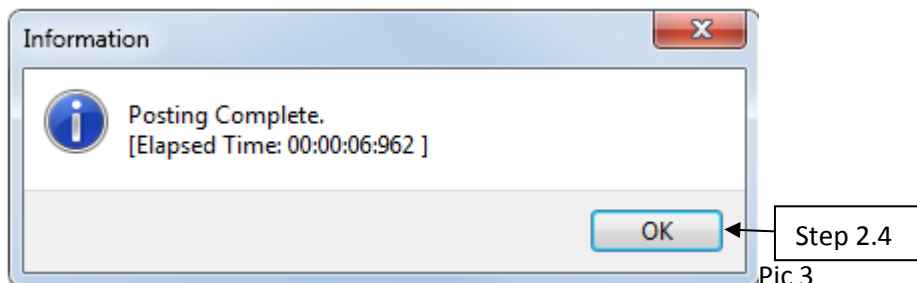
4 records 4 425.00

Local Net Total: 425.00 **Net Total:** 425.00

Pic1



Pic2



Pic 3

Step 3 : Sales | Invoice | Invoice auto generated.

Note :

Master Description

- If using 1.Generate Maintenance it will use the Quotation Master Description.
- If using 2.Generate Water it will shown how much the water usage [Master Description (MMM YYYY) - CurrentReading - PreviousReading=Usage@UnitPrice].
- If using 2.Generate Water with "Include Grid Detail Info." Option tick it will use the Quotation Master Description.
- Rounding Mechanism only for WATER & ELECTRIC Itemcode
- Make sure the UDF_WaterReading In Maintain Customer Default is 0 & not null.

For Stock item

- Must have ItemCode = WATER
 - Must have ItemCode = ELECTRIC
 - Must have Item Code = RTN5Cents
 - Must have ItemCode = OVERDUE is to record the interest Charges Rate
 - Price Tag => For Different UnitPrice for WATER & ELECTRIC
- Use Disc column as Rebate and Min Charge => **Format := Rebate+MinCharge**

Eg.

Rebate 11.75 & MinCharge 5 => 11.75+5

Rebate 0 & MinCharge 5 => 0+5

Rebate 12.30 & MinCharge 5 => 12.30

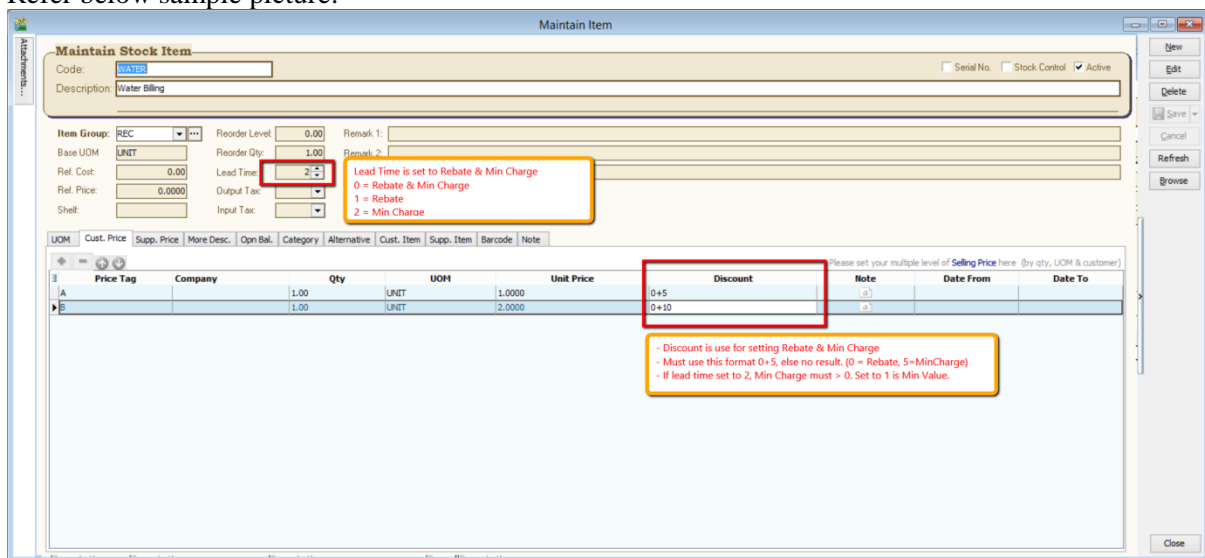
- Lead Time

0: Both,

1: Rebate Only,

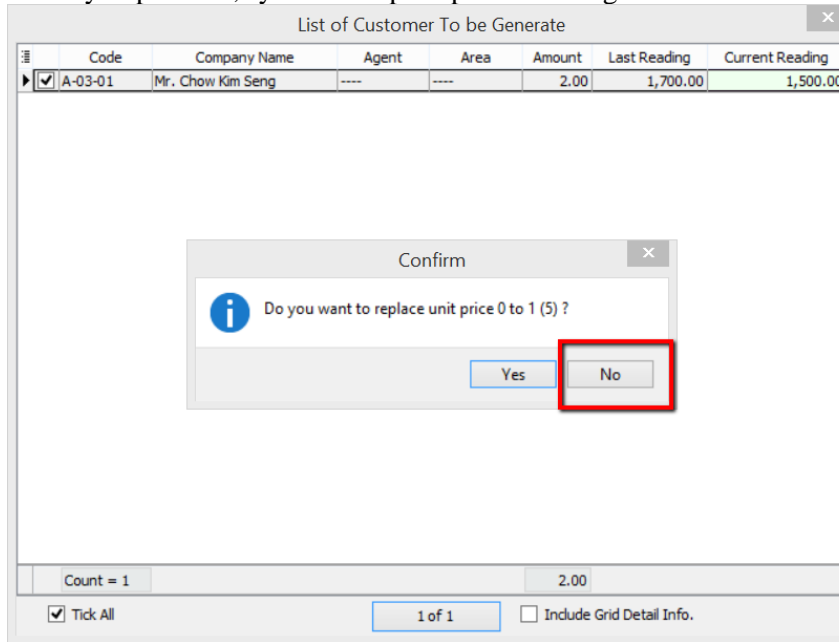
2: Min Charge Only

Refer below sample picture:



Pic4

When you press ok, system will prompt this message as below :



Pic 5

Note :

1. Press **No** so in system will capture the Price you have set at Cust Price Tab.
2. You may turn off this message from access right -> Tools | Maintain User | Edit | More | Access Right | Group | Untick Prompt Replace Unit Price Dialog(Except for ADMIN USER due to is full access right)
3. You may set the QTY in Maintain Item Cust Price Tab to capture Min Qty to have Min Charges.
4. For Water & Electric
 If Current Reading - Last Reading <= QTY(set in CustPrice), system will capture MinPrice RM 5(Refer Pic4)
 Else If Current Reading - Last Reading >= QTY(set in CustPrice), system will capture Cust Price Tab UnitPrice Column
 If did not set any price tag, then unitprice will always RM 1.(Advise set in cust price)
5. For Generate Maintainance
 - Price will follow QT unitprice

In Sales Document Listing

=====

- Is a batch delete base on the parameter selected.
- Once IV been deleted, the meter reading updated to Maintain Customer unable to revise back; User still has to manually amend in Maintain Customer.

In Customer Due Listing(Calc Interest Charges)

=====

- Auto Generate Sales DN for overdue IV.
- The rate is from Ref Price of OVERDUE Itemcode (just enter 0.1 for 10% pa)
- Must click on Button Apply first, only Click on Post DN Button(if not will have error Null Point Exception)
- Interest Charges calculation is excluded Tax Amount.

-Formula for UnitPrice :

A = TaxAmount * Outstanding/DocAmt

B = Outstanding – A

Unitprice = (Rate/365) * B

Note : Rate is capture from Maintain Item code = OVERDUE, RefPrice column.

-Formula for Qty :

-If Age < Calendar of the Month then

Qty = Age

Else

Qty = Based on the calendar day of the month

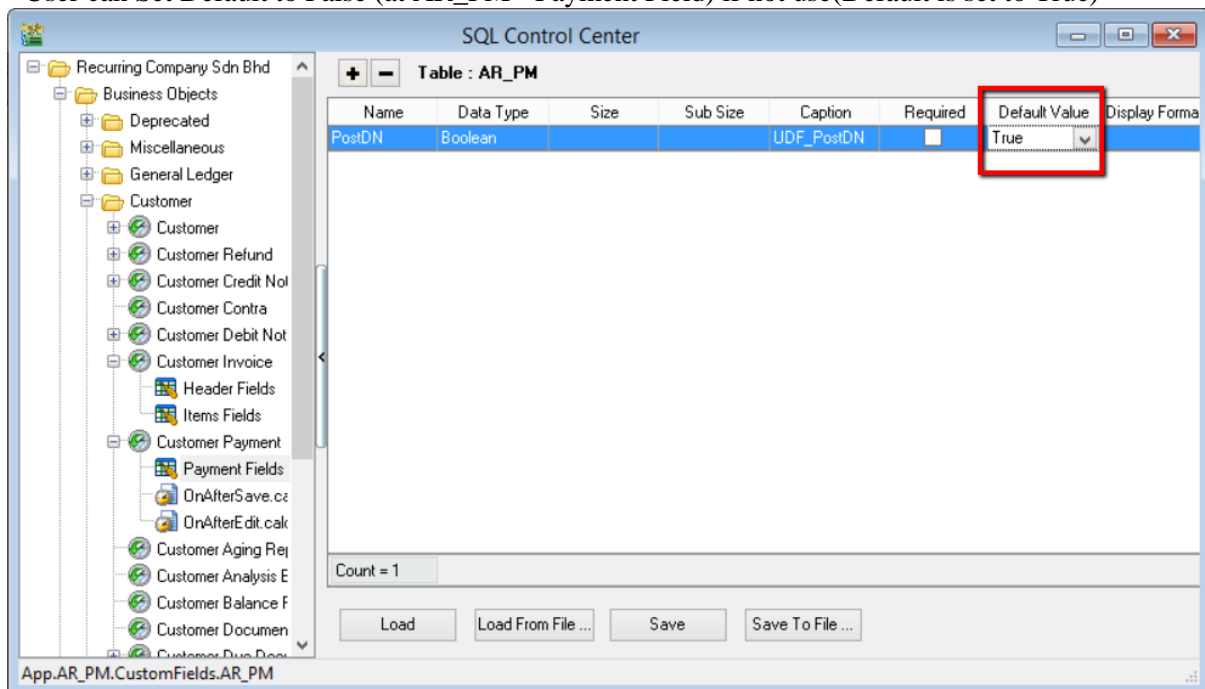
Subtotal = Unitprice * Qty

-Debit Note Date = Customer Due Document Date

In Customer Payment

- Will auto generate Overdue DN if the Knock-off IV is overdue.

- User can Set Default to False (at AR_PM - Payment Field) if not use(Default is set to True)



Formula: Rate/365 * KOAmt

Note : Rate is capture from Maintain Item code = OVERDUE, RefPrice column.

~~ END ~~