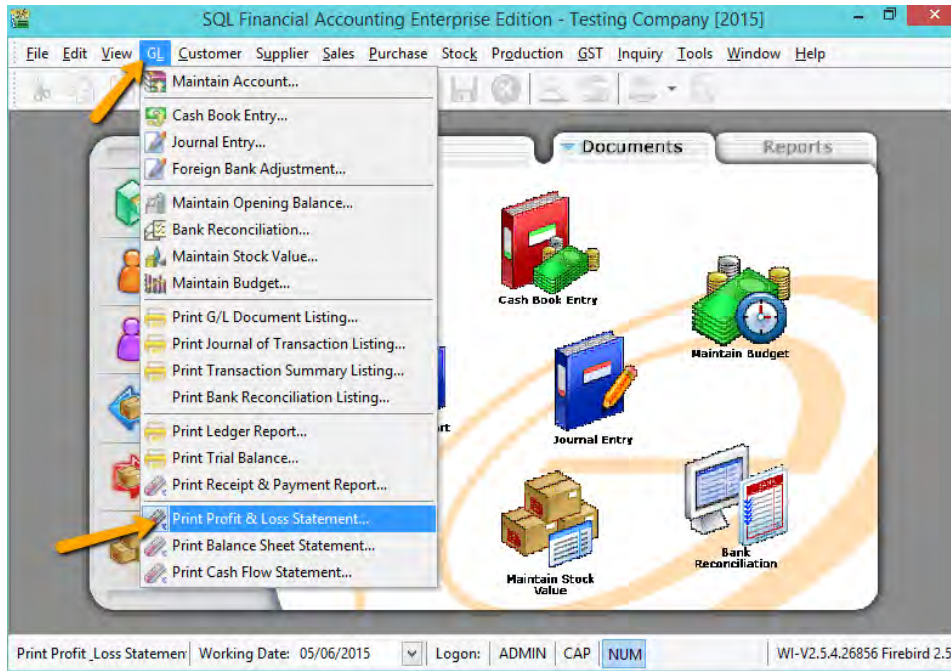
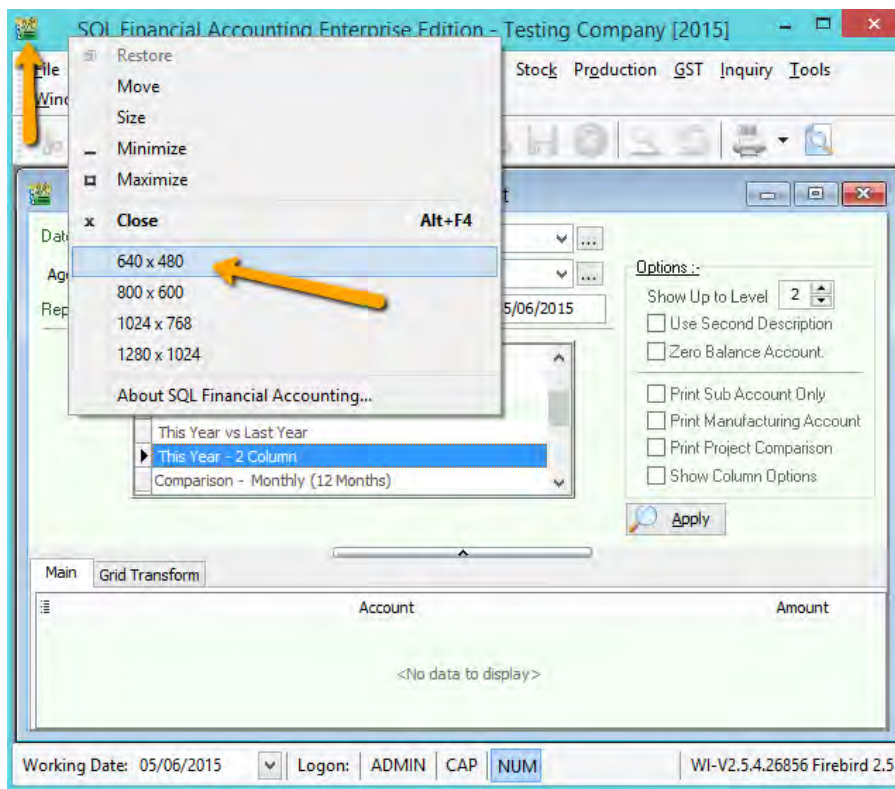


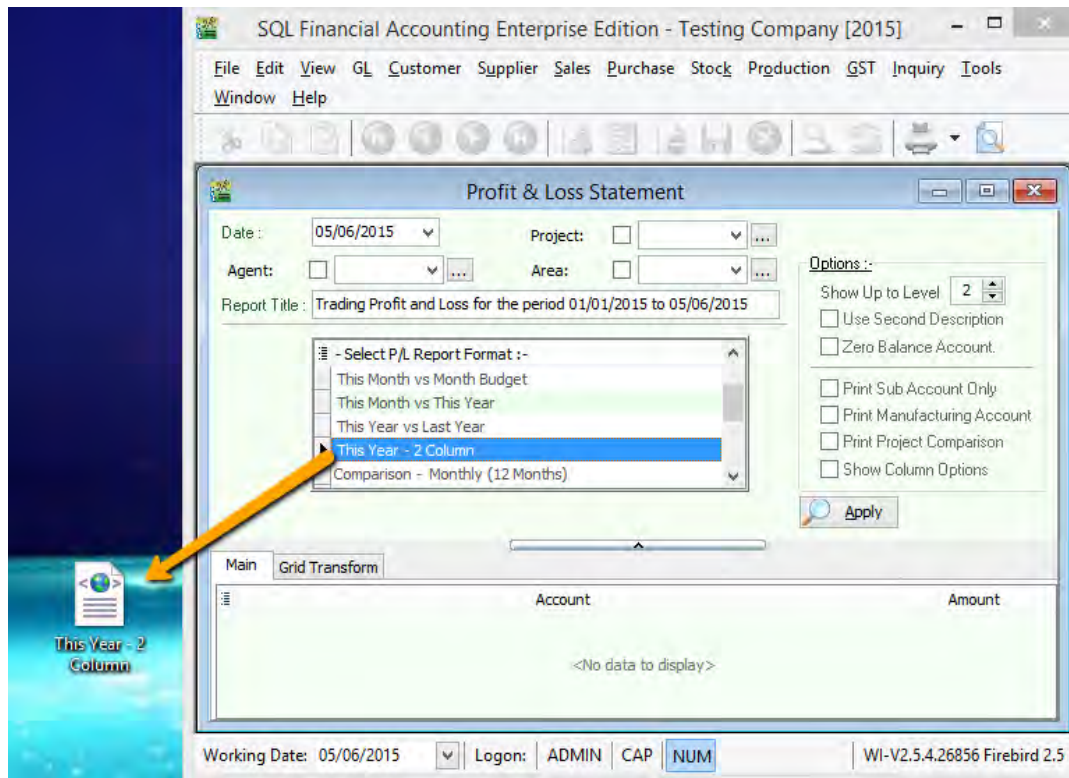
# How to Created profit and loss statement and balance sheet to more than 12 months



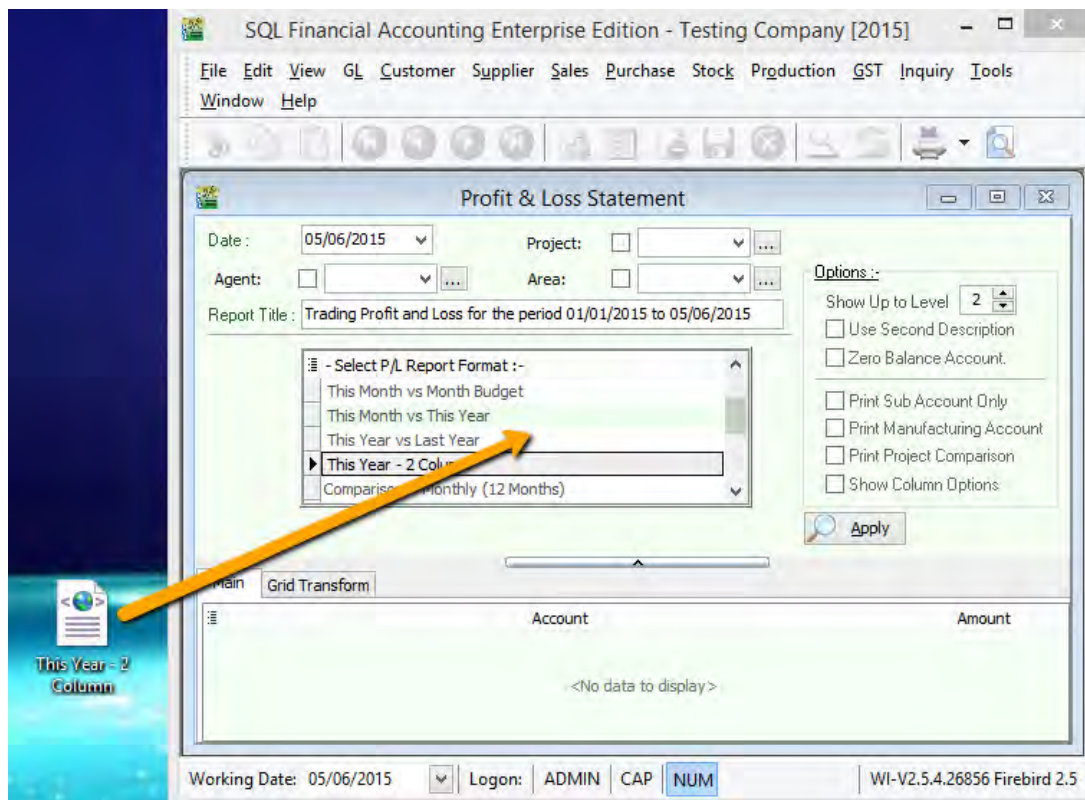
1) GL | Profit and Loss Statement



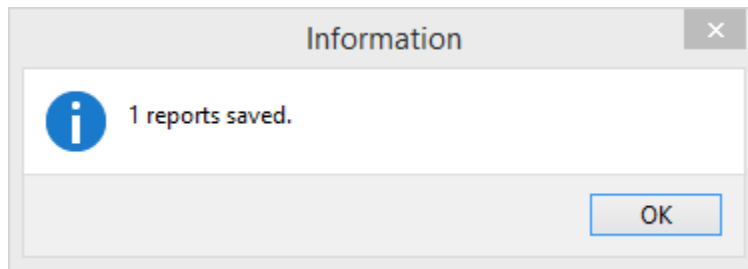
2) Right Click on SQL Icon | go 640 x 480 to smaller SQL Screen



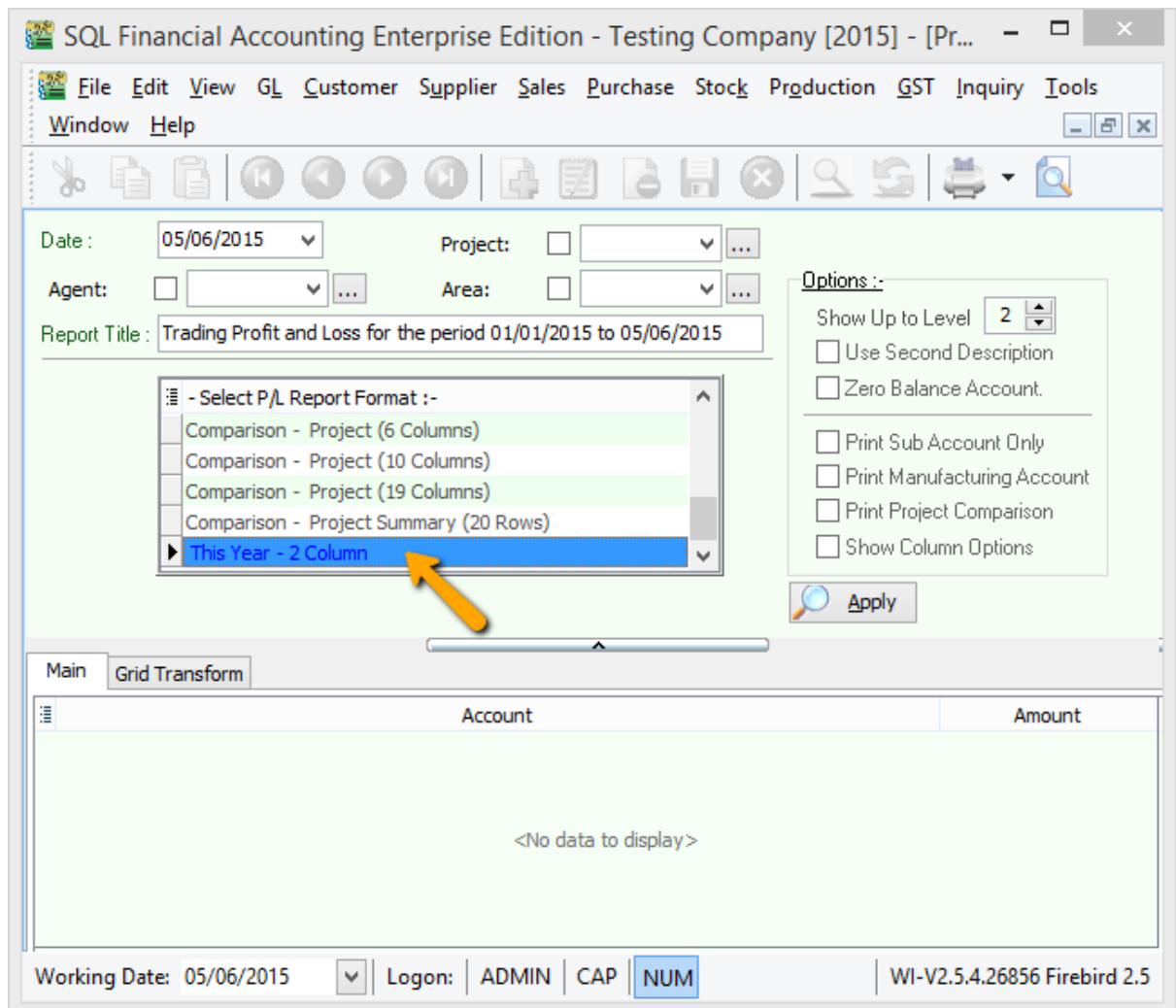
3) Click on the report name "This year-2 Column" | click and drag it to desktop



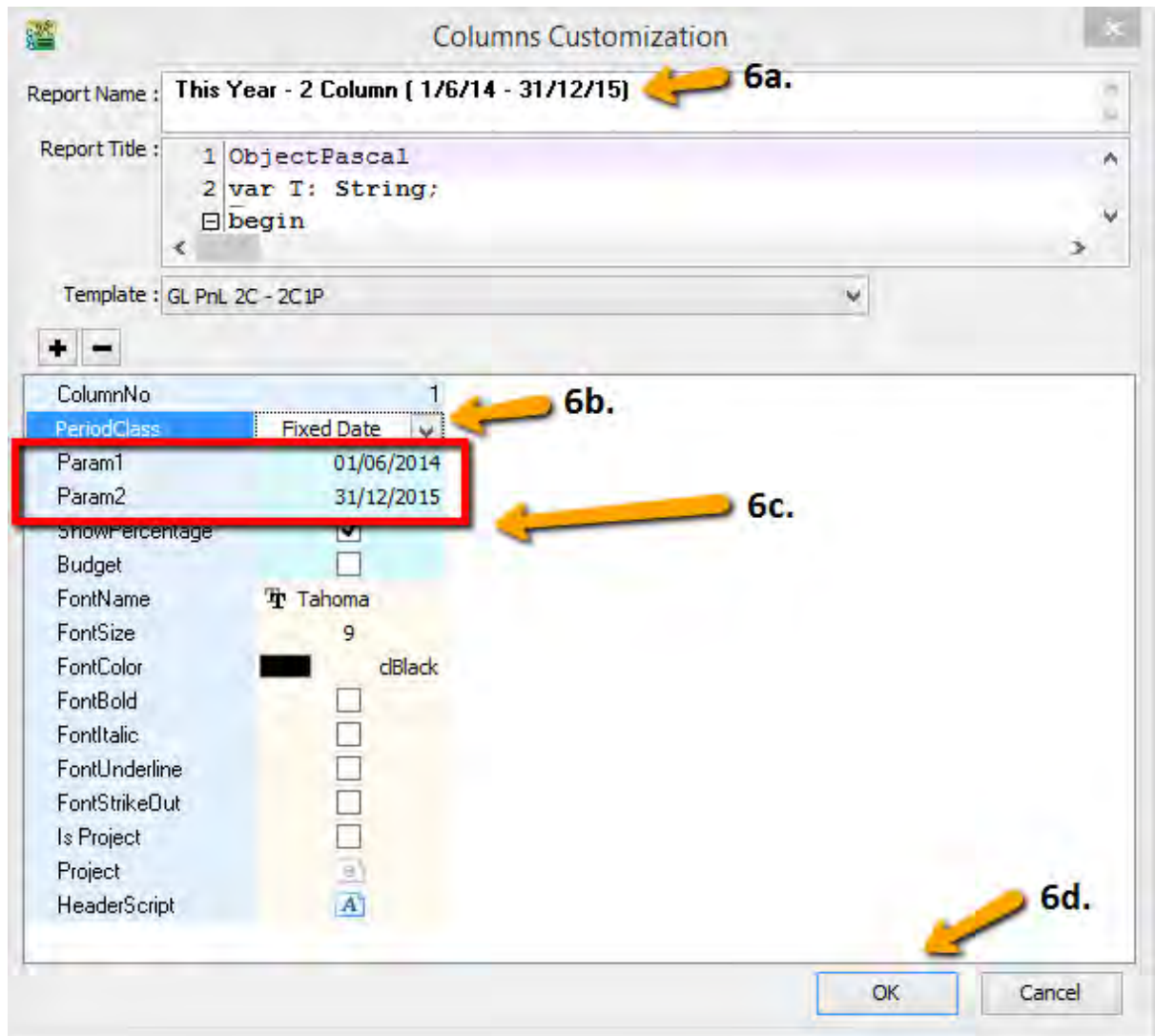
4) Click on the report from desktop and drag it back into SQL



5) After drag in will prompt dialog above | click on OK



6) Double click on the report name " this year-2Column" (in blue colour font)



6a) You can enter a report name

6b) Change the period class to **Fixed Date**

6c) Param 1 : Date From                  Param 2 : Date to

6d) Click on OK

- ✓ Apply the report as usual, the result will captured based on Param 1 & 2 set.
- ✓ Repeat the same step on GL | Print Balance Sheet Statement

**- DONE -**